






Zetterberg Custom
Homes & Remodeling


The Asbury *2,282 Sq. Ft.*

 3 Bedrooms


 2 Baths

 Opt. 3 Car Garage

The Asbury 2,282 Sq. Ft.

 3 Bedrooms

 2 Baths

 Opt. 3 Car Garage

OPTIONS

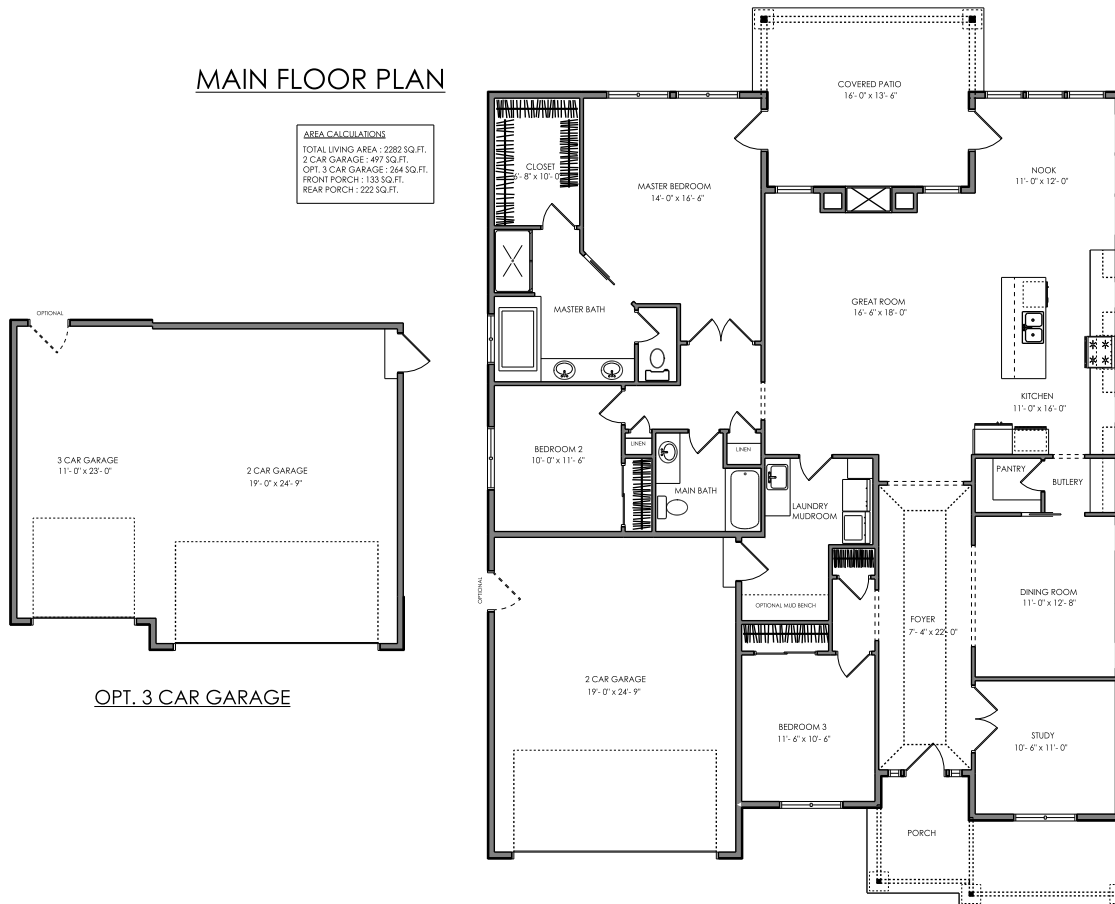
Exterior Fireplace
Multi-sliding door

Garage 3' man door
Study French Doors

Mudroom bench

MAIN FLOOR PLAN

AREA CALCULATIONS
TOTAL LIVING AREA: 2282 SQ. FT.
2 CAR GARAGE: 497 SQ. FT.
OPT. 3 CAR GARAGE: 764 SQ. FT.
FRONT PORCH: 133 SQ. FT.
REAR PORCH: 222 SQ. FT.



A Family Tradition Since 1969

DISCLAIMER: In a continuing effort to improve our homes, Zetterberg Custom Homes & Remodeling, LLC reserves the right to modify or change materials, specifications, and features without prior notice or obligation. Such changes may not be reflected in our marketing material or in our model homes.



**Zetterberg Custom
Homes & Remodeling**

zetterberg.com | 253.845.9203