






**Zetterberg Custom
Homes & Remodeling**

The Somerset *2,163 Sq. Ft.*

 3 Bedrooms

 2 Baths

 3 Car Garage

The Somerset 2,163 Sq. Ft.



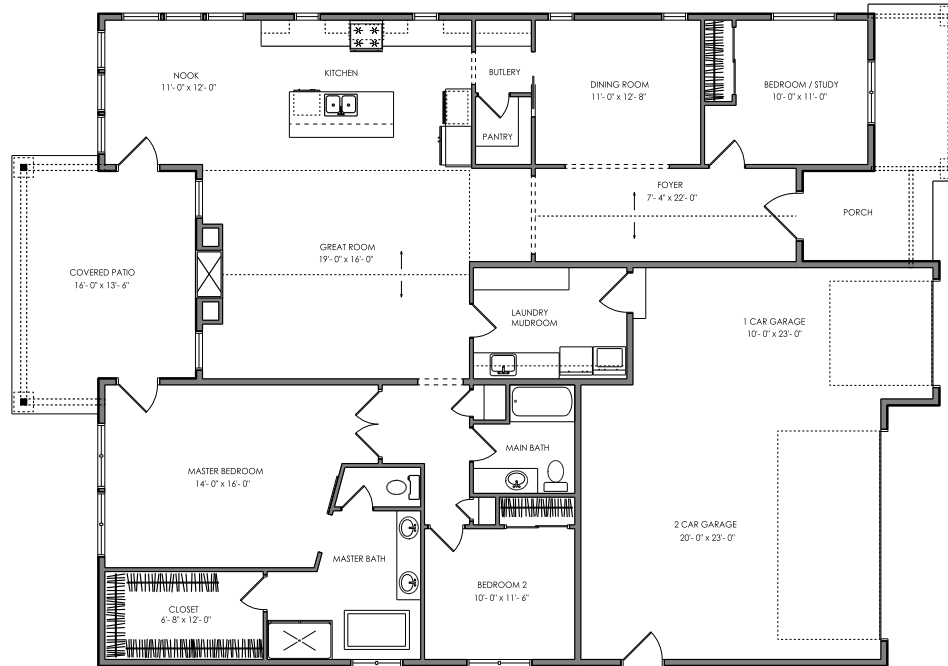
3 Bedrooms



2 Baths

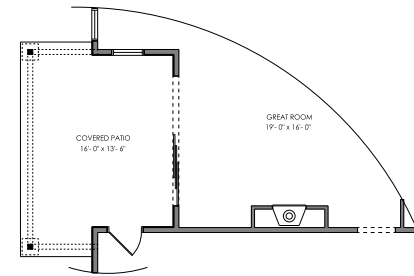


3 Car Garage

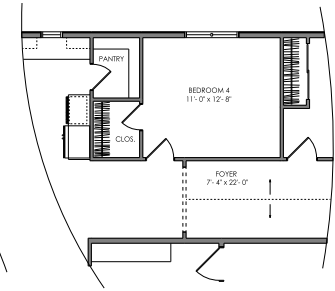


MAIN FLOOR PLAN

AREA CALCULATIONS
TOTAL LIVING AREA : 2163 SQ. FT.
GARAGE : 717 SQ. FT.
FRONT PORCH : 131 SQ. FT.
REAR PORCH : 230 SQ. FT.



GREAT ROOM OPTION



BEDROOM 4 OPTION

A Family Tradition Since 1969

DISCLAIMER: In a continuing effort to improve our homes, Zetterberg Custom Homes & Remodeling, LLC reserves the right to modify or change materials, specifications, and features without prior notice or obligation. Such changes may not be reflected in our marketing material or in our model homes.



**Zetterberg Custom
Homes & Remodeling**

zetterberg.com | 253.845.9203